

## Women's Heavy Polo Longsleeve



### colours:

 white

 black

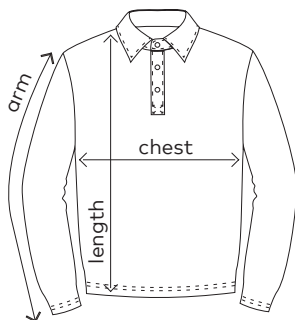
 fire red

 navy



**4605 | XS– XXL | 220 g/m<sup>2</sup> | 100 % cotton**

Timeless longsleeve piqué polo with high-quality finished button panel and 3 tone-in-tone buttons as well as side slits, produced of combed cotton. The polo has a modern cut.



|               | XS | S  | M  | L  | XL | XXL |
|---------------|----|----|----|----|----|-----|
| <b>chest</b>  | 40 | 43 | 46 | 49 | 53 | 56  |
| <b>length</b> | 59 | 62 | 65 | 68 | 71 | 73  |
| <b>arm</b>    | 60 | 61 | 62 | 62 | 62 | 62  |

Sizes and weights + /– 5%. Subject to amendment.